

# Small town. Big fun.

ON THE 49<sup>TH</sup> PARALLEL

Ladysmith Archives  
Unit B – 1115 First Avenue (below the Tim Horton's)  
250-245-0100

[www.ladysmithhistoricalsociety.org](http://www.ladysmithhistoricalsociety.org)

Ladysmith Waterfront Art Gallery  
610 Oyster Bay Drive  
250-245-1252

[www.ladysmithwaterfrontartgallery.com](http://www.ladysmithwaterfrontartgallery.com)

Ladysmith Maritime Society  
Museum, Boat Tours and Community Marina  
610 Oyster Bay Drive  
250-245-1146

[www.lmsmarina.ca](http://www.lmsmarina.ca)

Town of Ladysmith – Trolley Service

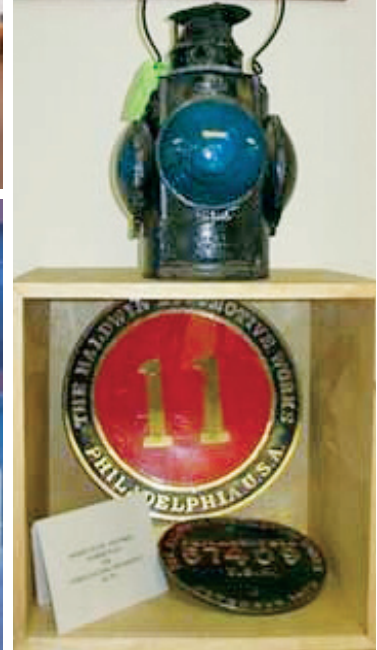
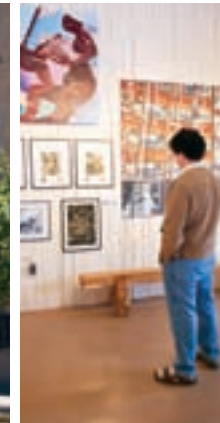
[www.ladysmith.ca](http://www.ladysmith.ca)

Tourism Ladysmith  
[www.tourismladysmith.ca](http://www.tourismladysmith.ca)

## Ladysmith HERITAGE ROUTE



Why not make a day of it...



**i** Visitor Information Centre  
Ladysmith, BC  
VANCOUVER ISLAND  
250.245.2112



TOURISMLADYSMITH.CA

PHOTOS: Ladysmith Archives, Thomas Wagner,  
Ladysmith Maritime Society, and Town of Ladysmith

PRINTED IN CANADA

The **Ladysmith Heritage Route** highlights Ladysmith's history of coal mining, forestry, rail and marine industry. The Route provides a link from our living heritage downtown to the working waterfront and Transfer Beach Park.

Visit Ladysmith and learn about local history at the Archives, stroll downtown and enjoy the heritage artifacts lining First Avenue. While downtown, stop for a snack or meal in one of the heritage buildings, hop on the trolley bus and head down to the Waterfront where you can admire and collect the work of local artists at the Waterfront Art Gallery – located in the heritage “Machine Shop”. Visit the Maritime Museum and take part in a historical boat tour of the Ladysmith Harbour. End your day with a visit to Transfer Beach Park and enjoy “A View to Sea”.

Come explore our history, celebrate achievement in the early days and today!



# LADYSMITH HERITAGE ROUTE

## DOWNTOWN LADYSMITH



### A Ladysmith Archives

The Ladysmith Archives, operated by the Ladysmith & District Historical Society, opened in November 2008. The Archives includes an extensive collection of items that highlight Ladysmith's history. In 2009, the Heritage Society of British Columbia awarded the Town of

Ladysmith and the Society with an "Award of Honour" in recognition of the Ladysmith Archives Project.

### B Fairgrounds Sign and Agricultural Hall

The concrete Recreational Fairgrounds sign was originally placed at this corner to mark the Agricultural Hall (the "Aggie"), built in 1922, and the fairgrounds (as seen on the cover photo). The Hall and Sports Fields were valuable public venues, in an era before in-home entertainment was widely available. The sites continue to be used for community events. In 2000, the Heritage Society of BC recognized the Restoration of the Agricultural Hall with an award of "Outstanding Achievement".



### C Fordson Tractor

This type of agricultural tractor dating from the late 1920's, although originally designed for farm purposes, was used on the west coast for hauling small logs in various operations.

### D Ship Anchor

The anchor in the centre of the traffic roundabout was retrieved from Ladysmith Harbour in approximately 1962 by employees of Crown Zellerbach. It is thought to have come from an early sailing vessel.



### E Diamond Rail Switch

Ladysmith shipped many loads of logs brought directly from the logging "shows" via rail. Log trains had to wait to be switched to cross the Vancouver Island E&N Rail line. A worker operating this switch was stationed in a tower overlooking the rail lines.

### F Bull Block

Blocks of this type were used in logging to direct the large wire ropes used to haul newly cut logs to the loading area or landing. Blocks were built in various sizes and configurations to suit the particular duty and load requirements.



### G Fordson Donkey

Adapted from a Fordson Farm Tractor, this small "donkey engine" was used in logging and to build and repair rail bridges. It was capable of hauling itself on and off rail cars at work sites.



### H Caterpillar

Dating from the early 1930's, this caterpillar was used in Comox Logging's Ladysmith operation in the 1930's and 1940's.



### I 49th Parallel Cairn

This stone cairn was dedicated in 1958 and identifies the location of Ladysmith on the 49th Parallel and signifies the change in municipal status from a City to a Town.



### J Ore Car

A copper smelter, refining ore mined at Mt. Sicker 13 kilometres to the southeast, was built in 1902. This ore car, filled with original ore from the Mt. Sicker mine, was used to deliver ore from underground to the surface. As designed, the car could be turned and dumped from either side of the small gauge railway.



### K Knight's Clock

For many small towns, a clock near the centre of town was the appointment and meeting place. Such a clock had to be highly visible, easy to find, and keep accurate time! The Knight's Clock served this role for many years. It was originally mounted on Knight's Hardware Store which once stood at this location on First Avenue.

### L Heritage Downtown

Beginning in 1901, many buildings were relocated to Ladysmith from the South Nanaimo area and along with new construction, formed the downtown of Ladysmith we still know today.



The 1986 heritage revitalization of downtown received a national "Main Street Canada" award recognizing it as one of the four best revitalization projects in Canada. In 2003, the downtown was further recognized when Ladysmith received the National Communities in Bloom Award for a beautiful town and heritage conservation.

### M Metal Collage

This unique display represents a collage of historic metal artifacts together with a series of photographs depicting the history of Ladysmith. In 1991, the Collage received an "Award of Honour" from the Heritage Society of British Columbia.



### N Old Highway Sign

The restored highway sign provides a brief overview of the establishment of Ladysmith, incorporated June 3, 1904.

### O Water Pump

This one cylinder Fairbanks Morse water pump, patented in 1916, produced six horsepower at 450 RPM and was used to pump water from small streams to steam-powered logging equipment over distances up to 8 kilometres.



## ON OUR WATERFRONT

### T Weigh Scales

During Ladysmith's heyday as a coal shipping port, rail cars loaded with coal would arrive at the waterfront and be weighed prior to shipping. This display is all that remains today of the weighing mechanism which was located beneath the rail track adjacent to this spot. An operator would record the weight of each car passing through the station.



### U Steam Donkey

Originally fuelled with wood from the logging operations and creating steam with water from nearby streams, the steam donkey represented a big improvement in logging power in the early 1900s. The steam donkey signalled the end of the era when horses or oxen dragged logs over 'skid roads' constructed of small logs. Some Donkey engines, converted to oil fires, remained in use as late as the 1950s.



### V Boom Boat

Small boom boats or 'sidewinders' like this one evolved from the need to move logs effectively in booming grounds. Unlike most boats, the heavily reinforced boom boat has a drive system capable of turning in a full circle under the boat, providing propulsion in any desired direction, hence the nickname 'sidewinder'. Today, the boom boat sits in sand on Transfer Beach and is enjoyed by children visiting our waterfront park.



### W Harpoon Gun

Although Ladysmith was not a whaling port, harpoons such as this were used by whalers working along the BC coast. This harpoon gun is from a whaling ship that operated out of Coal Harbour, Vancouver.



### X Maritime Museum, Boat Tours and Artifacts

On display at the top of the docks is a ship's mast, anchor and boom boat. On the docks, the Ladysmith Maritime Society's floating restored and museum boats and highlight Ladysmith's maritime history. In 2008, the museum received an "Award of Honour" from the Heritage Society of BC. In the summer months a restored lifeboat, the *Maritimer*, takes visitors on a two-hour historical tour of the Ladysmith Harbour.



## THE RAILWAY DISTRICT



### P Machine Shop/ Waterfront Art Gallery

In the early 1940's, Comox Logging and Railway (CL&R) built the "Machine Shop" – a large, modern repair shop to maintain the steam locomotive engines

and truck logging equipment. The Machine Shop and supporting maintenance shops remain as they were first built and are the only intact remnants of the waterfront industrial history of Ladysmith. In 2002, the Heritage Society of British Columbia awarded the Town of Ladysmith with an "Award of Honour" in recognition of the Machine Shop. CL&R left the building in 1986 at which time the Town received a grant from the Expo 1986 Legacy which was used to restore the building. Today, the Machine Shop is home to the Waterfront Art Gallery and other community and business use.

### Q Tube Tumbler

This drum tumbler was used to remove the carbon build-up from the outer surfaces of boiler pipes in steam locomotives.

